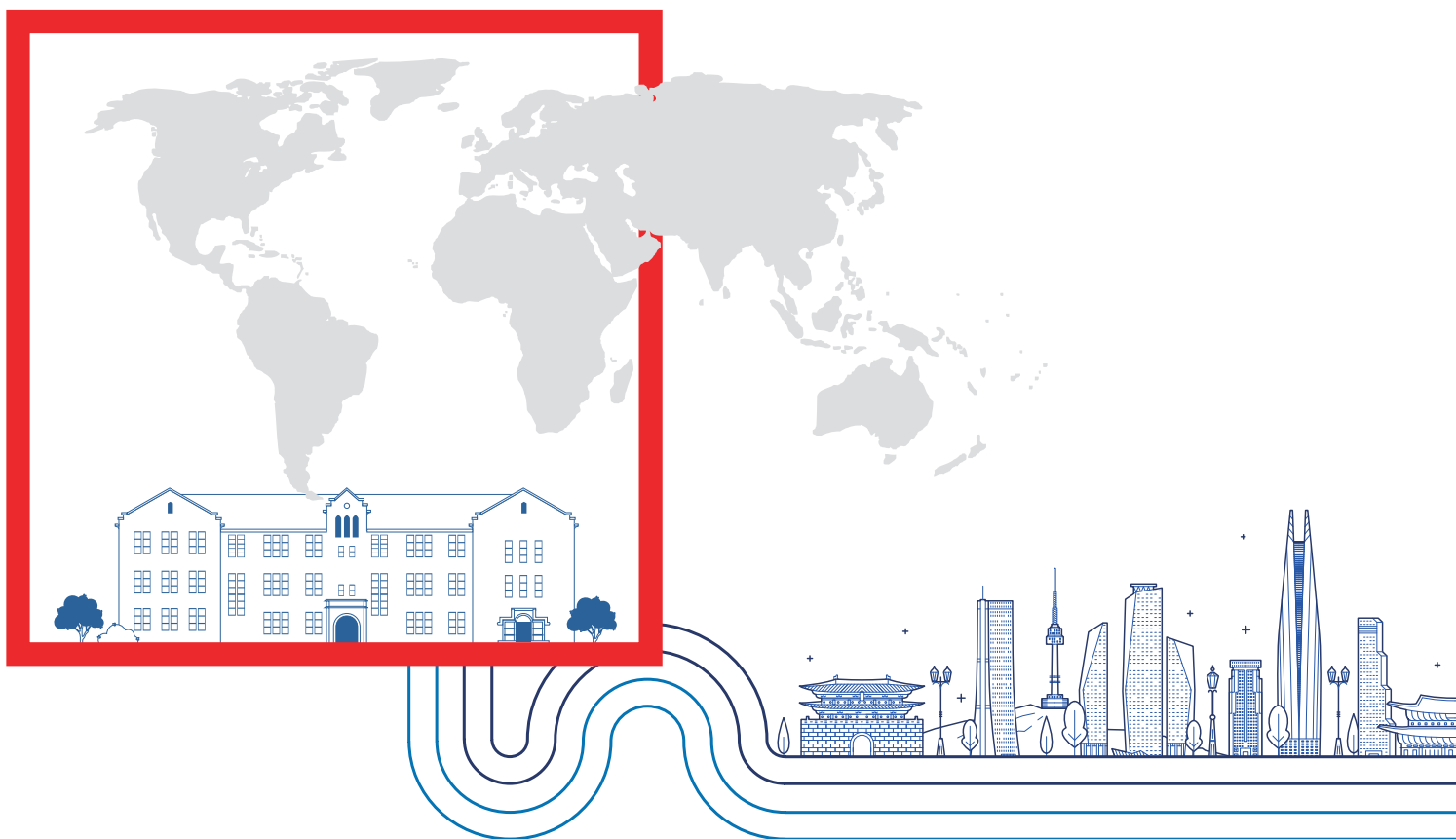




2 0 2 6

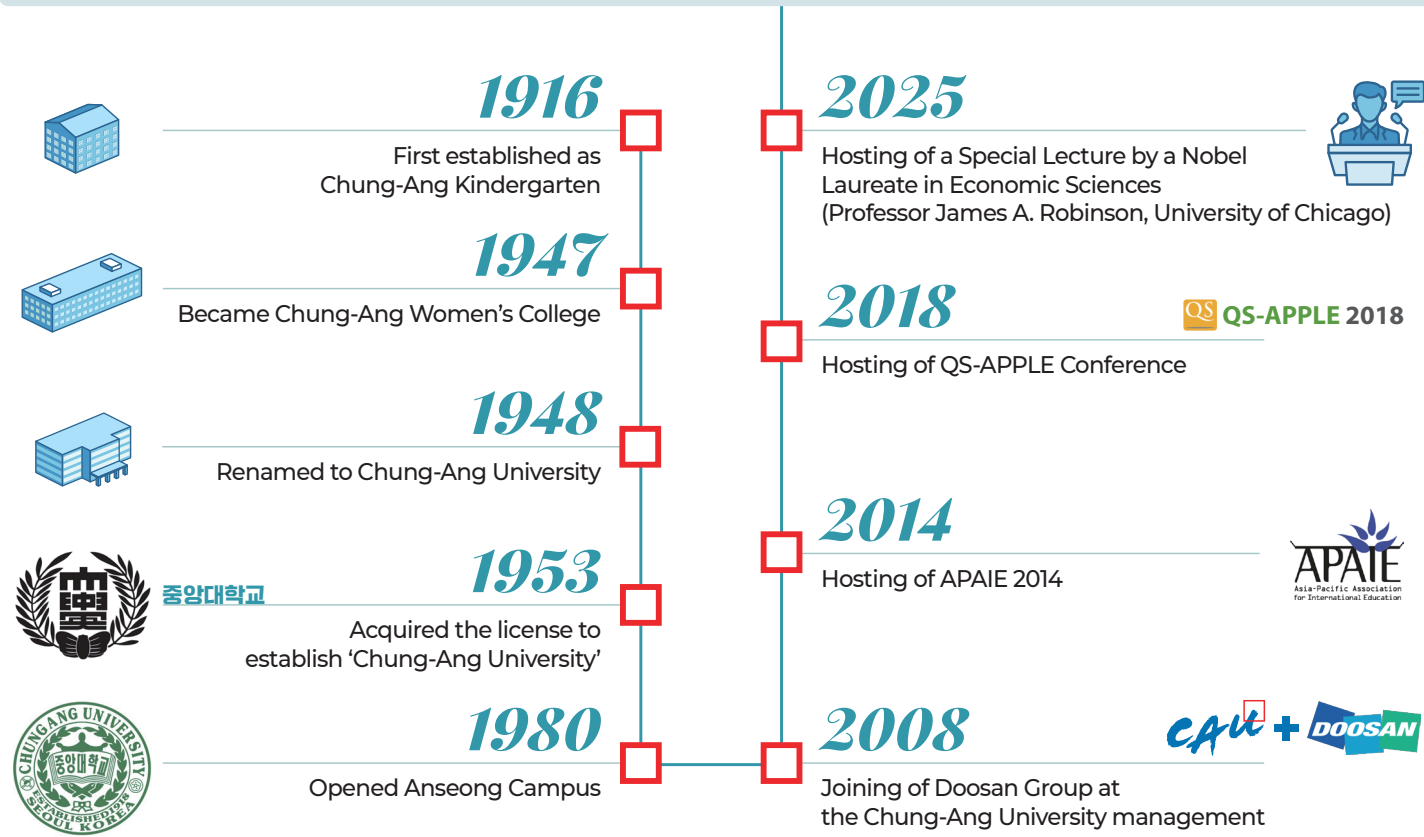
CHUNG-ANG UNIVERSITY

INTERNATIONAL PROGRAM

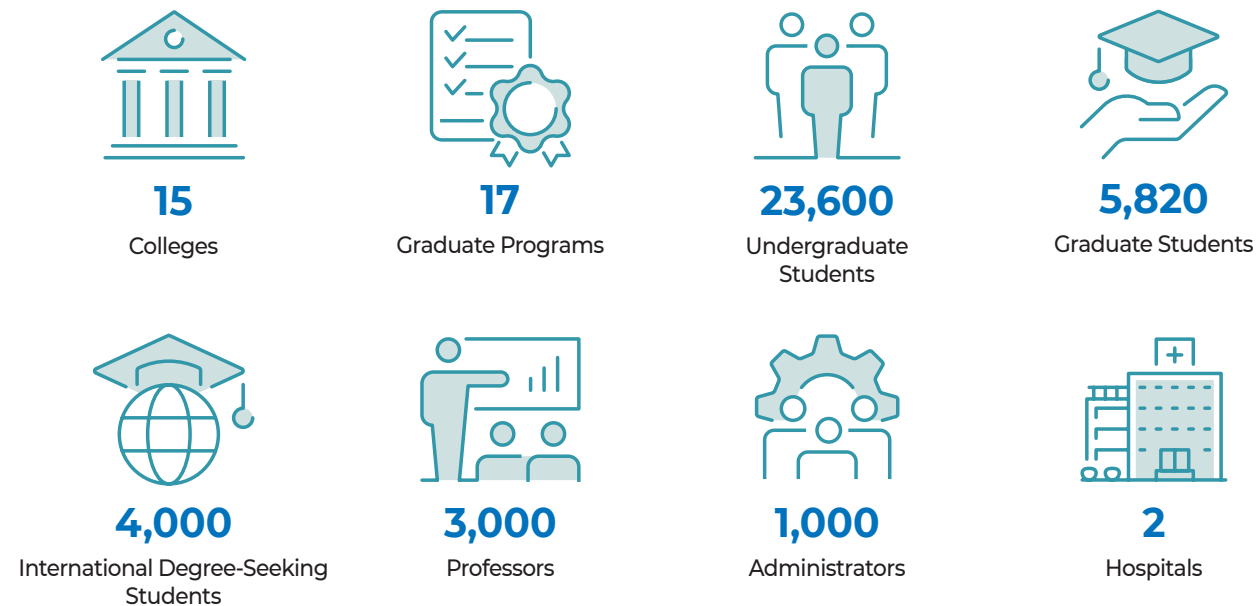


WHY CAU

History



Facts and Figures



Achievements

65th
QS UNIVERSITY RANKINGS ASIA 2026

74th
THE World University Rankings Asia 2024

51st
QS WORLD UNIVERSITY RANKINGS 2025 by subject
· Nursing
· Engineering Petroleum
· Library and Information Management
· Social Policy and Administration

51st Nursing
76th Food Science & Technology
SHANGHAI RANKING 2025

61.2 billion KRW
Digital Innovation Sharing University Semiconductor System Project Over Six Years

185.3 billion KRW
College of Arts, College of Arts and Engineering, Graduate School of Advanced Imaging Science, Multimedia & Film Five-Year Awarded Research Grants

800 million USD
Top 5 Research Private University in Korea (1 trillion KRW)

Alumni

CAU Honorary Doctorates



Dwight D. Eisenhower
34th President of USA



Richard M. Nixon
37th President of USA



James H. Zumberge
President of University of Southern California



Joseph P. Kennedy
US Politician

Official



Lee Jae-Myung
President



Yu In-Chon
Former Minister of Culture, Sports and Tourism



Park Yang-Woo
Former Minister of Culture, Sports and Tourism

Prize Winner



Kim Kyung Hoon
School of Arts 2019
Pulitzer Prize Winner



Chang W. Lee
Department of Architectural Engineering
2002 Pulitzer Prize



Lee Keun
2014 Schumpeter Prize



Choi Woo-Shik
Actor



Son Hyunjoo
Actor



Moon Byung-Gon
Movie Producer

Artist



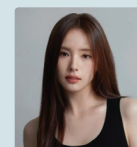
Hyun Bin
Actor



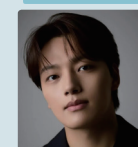
Lee Do-Hyun
Actor



Park Shin-Hye
Actor



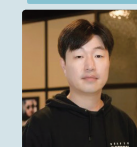
Shin Se-Kyung
Actor



Yeo Jingoo
Actor



Kim Heeseon
Actor



Jang Won-Seok
School of Arts
Producer of The Roundup Series



College of Humanities



Linguistics Subject 2025
151st

College of Social Sciences



Library and Information Management Subject 2025
51st



Social Policy and Administration Subject 2025
51st

College of Education



A 3 consecutive cycles in the Ministry of Education's evaluation of teacher training institutions nationwide

College of Natural Sciences



Geography Subject 2025
201st

College of Biotechnology & Natural Resource



CAU BIO Green 2030 : aims to lead global biotechnology innovation



Food Science & Technology Subject 2025
76th

College of Engineering



Petroleum Engineering Subject 2025
51st



Architecture Subject 2025
151st

College of ICT Engineering



Training future engineering leaders in the field of ICT

College of Software



- World-class research in computer software theory and technology
- Department of Artificial Intelligence newly established in 2021

College of Business and Economics



- First and Best in Korea since 1948



reaccreditation in 2023

College of Pharmacy



Subject 2025
151st

College of Medicine



More than 3,500 outstanding medical professionals since 1971

Red Cross College of Nursing



Student Admission Capacity :
ranked 1st among the department nursing in Seoul area



Subject 2025
51st



Subject 2025
51st

College of Arts The Driving Force of K-Culture



Numerous artists leading the fields of Korean arts and culture industry

College of Sport Sciences



Cultivating professional athletes and sports industry experts

College of Art & Technology



Nurtures world-class professionals in the entertainment industry

Graduate School of Business



E-CAU Leader :
Ethical, Creative, Action-oriented, Universal Leader

Graduate School of International Studies



Train students to be globally competitive in international studies and foreign language skills

Graduate School of Advanced Imaging Science, Multimedia and Film



Leading research and education in advanced visual convergence content

- Securing 9 million USD Seoul Future-Oriented Content Convergence Cluster project
- Receiving approximately 750,000 USD annually for a specialized graduate program in OTT content
- Securing a 2.25 million USD project for a cultural technology leading graduate school
- Developing Korean-style digital cinema compression technology
- Advancing various AI technologies



College of Humanities



- Department of Korean Language and Literature
- Department of English Language and Literature
- School of European Languages and Cultures (German, French, Russian Language and Literature)
- School of Asian Languages and Cultures (Japanese, Chinese Language and Literature, Comparative folk studies)
- Department of Philosophy
- Department of History

College of Natural Sciences



- Department of Physics
- Department of Chemistry
- Department of Biological Sciences
- Department of Mathematics

College of Biotechnology & Natural Resource



- School of Bioresource and Bioscience (Animal Science and Technology, Integrative Plant Science)
- School of Food Science and Technology (Food and Nutrition, Food Science and Technology)
- Department of Systems Biotechnology

College of Social Sciences



- Department of Political Science and International Relations
- Department of Public Service
- Department of Psychology
- Department of Library & Information Science
- School of Social Welfare (Social Welfare, Child Welfare, Youth Studies, Family Welfare)
- **School of Media & Communication (Since 1958, 1st School of Media & Communication in Korea)**
- Department of Sociology
- Department of Urban Planning and Real Estate

College of Engineering



- School of Civil and Environmental Engineering, Urban Design and Studies (Civil and Environmental Engineering, Urban Design and Studies)
- School of Architecture and Building Science (Architecture, Architectural Engineering)
- **School of Chemical Engineering (51st QS Ranking by Subject)**
- School of Material Science
- School of Mechanical Engineering
- School of Energy System Engineering

College of Education



- Department of Education
- Department of Early Childhood Education (Since 1922)
- Department of English Education
- Department of Physical Education

College of ICT Engineering



- School of Electrical and Electronics Engineering
- School of Integrative Engineering (Nano Materials Engineering, Biomedical Engineering)
- Department of Intelligent Semiconductor Engineering

College of Software



- School of Software
- School of Artificial Intelligence

College of Business and Economics



- School of Business Administration
- School of Economics
- Department of Applied Statistics
- Department of Advertising and Public Relations
- Department of International Logistics
- Department of Industrial Security
- School of Global Knowledge Management

College of Pharmacy



- School of Pharmacy

College of Medicine



- Department of Medicine

Red Cross College of Nursing



- **Department of Nursing (51st QS Ranking by Subject)**

College of Arts



- **School of Performing Arts and Media (Creative Writing, Theatre, Film Studies, Photography, Dance, Theatre and Film Design) - No. 1 School of Performing Art and Media in Korea**
- School of Fine Arts (Korean Painting, Western Painting, Sculpture)
- School of Design (Crafts, Industrial Design, Visual Communication Design, Housing & Interior Design, Fashion Design)
- School of Music (Composition, Voice Music, Piano, Orchestral Music)
- School of Korean Music
- School of Global Arts

College of Sport Sciences



- School of Sport Sciences (Recreation & Leisure Sports, Sports Industry, Golf)

College of Art & Technology



- School of Art and Technology

Graduate School of Business



- Global MBA

Graduate School of International Studies



- International Studies Program
- Advanced Interpretation & Translation Program

Graduate School of Advanced Imaging Science, Multimedia and Film





Research funding in Korea

Advanced Fields 2024 Selected Support Projects

- Advanced Materials – Nano Convergence : Innovative Convergence University Project for Advanced Fields
- Metaverse Convergence Graduate School Support Project
- University ICT Research Center Development and Support Project

**TOP
5**

DAAD

Deutscher Akademischer Austauschdienst

Chung-Ang University the only in Korea to host DAAD research center

The Center for German and European Studies (Zentrum für Deutschland- und Europastudien, ZeDES) at Chung-Ang-University in Seoul is a renowned research facility which was selected by the German Academic Exchange Service (DAAD) for an exclusive funding program. It stands out due to excellent contributions in research and education in the field of German and European Studies.

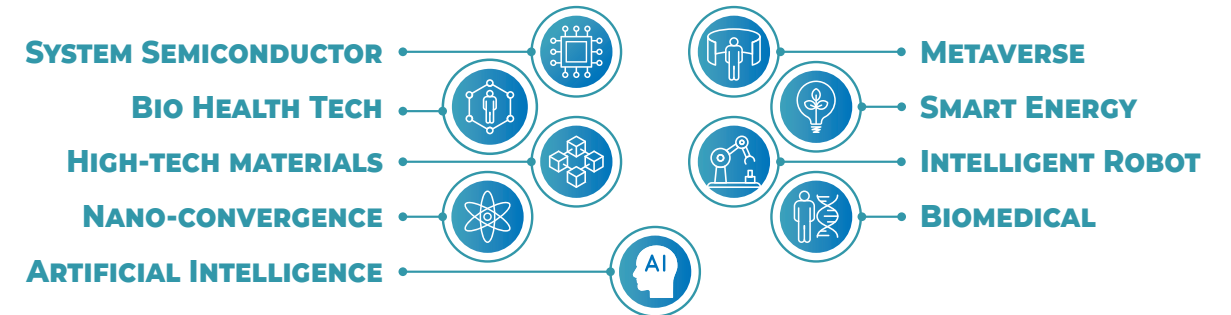
Research Units

ZeDES fosters three main research units, with their focus dedicated towards “Modern History of Germany”, “Critical Theory of the Frankfurt School”, and “German Literature of the 20th and 21st Century”. Renowned scholars in the field of history, philosophy, social science, and German studies from different Korean universities are joined together to contribute their expertise to these research units.

Cooperating German Universities



CAU is Expanding Its Research Capabilities in Advanced Fields



IceCube Collaboration

The IceCube Neutrino Observatory, the world's largest neutrino detector, located at the South Pole, is an international consortium of over 350 scientists from 58 institutions across 14 countries. The international team is responsible for the scientific program, and many of the collaborators contributed to the design and construction of the detector.

The observatory comprises of a cubic-kilometer array of optical sensors embedded deep within Antarctic ice, designed to detect high-energy neutrinos originating from cosmic sources.



Chung-Ang University

Research Publication Incentives Policy

To improve the ability of researchers by encouraging the publication of high-quality research papers, and to strengthen the external competitiveness of Chung-Ang University by rewarding international collaboration and high citations, a jointly appointed professors at CAU may be eligible for incentive benefits if the scientific affiliation specified in the published research paper is under "Chung-Ang University" and the research paper is published in academic journals ranked in the top 10% in the Web of Science database – SCIE, SSCI or A&HCI.

Purpose of the Incentive Benefits

- 1 Improve the ability of researchers by encouraging the publication of high-quality research papers.
- 2 Strengthen the external competitiveness of Chung-Ang University by rewarding international collaborations and high citations.

Requirements for Granting the Incentive Benefits

- 1 Faculty or researchers from other universities or research institutes who hold continuing appointments in their home institutions will be jointly appointed as a professor at Chung-Ang University. A joint appointment professor is eligible for incentive benefits.
- 2 The scientific affiliation specified in the published research paper must be "Chung-Ang University."
- 3 The research paper should be published in academic journals ranked in the top 10% in the Web of Science database (SCIE, SSCI, or A&HCI).

Amount of Incentive Benefits

The incentives below are all based on a single first/corresponding author.

If two or more professors of Chung-Ang University are the first/corresponding authors, the incentive will be divided by the number of first/corresponding authors from the university.

If there is no first/corresponding author from Chung-Ang University, one-fifth of the incentive below will be granted to the co-authors.

1. For Journal Publishing

Journal Classification	Journal Publishing	
	Incentives (KRW)	Incentives (USD)
Science, Nature, Cell, NEJM	30,000,000	20,580
SCIE IF 15	10,000,000	6,860
SCIE / SSCI / A&HCI	If top 5%	6,000,000 / 4,120
	If top 10%	5,000,000 / 3,430


*1USD = 1,458KRW (Exchange rate as of Nov. 14th, 2025)

2. For Citations

Period	Number of Citations	Citations	
		Incentives (KRW)	Incentives (USD)
Within 2 years	20	1,000,000	685
	30	2,000,000	1,370
Within 3 years	50	3,000,000	2,060
	100	5,000,000	3,430
	300	10,000,000	6,860
	500	20,000,000	13,720
	1,000	25,000,000	17,150
	2,000	30,000,000	20,580


*1USD = 1,458KRW (Exchange rate as of Nov. 14th, 2025)

Experience a Unique Study Abroad and Exchange Program at CAU




1,000


Over 1,000 English courses offered in a variety of subject areas




Customized Korean Language courses



See-Saw Program



On-Campus Internship (Global Student Internship)




Official YouTube Channel Management for the Office of International Affairs

Academic Schedule


Category	Spring Semester	Fall Semester
Application	Mid November	Mid May
Semester	March 2 nd ~ June 21 st	September 1 st ~ December 21 st

Supports for International Students




GLAM

Global Ambassador




CALIS

Leaders of International Students




GCC

Global Community Center




GF

Global Fairs



Hospital

CAU Hospital International Healthcare Center



Dormitory

3000+ On-campus Dormitory

Scholarship and On-Campus Internship for International Students



Global Student Internship

- Language exchange with CAU students
- Native speakers of English, French, Spanish, German, Japanese or Chinese
- Approx 600 USD per semester



OIA Fellowship

- Internship at OIA office
- Approx 1,000 USD per semester



Global Korea Scholarship

- Students deemed qualified by the NIIED (National Institute for International Education)



ASEM-DOU Scholarship

- Students from European partner universities
- 4,000 Euros per student



Visiting Student Scholarship

- Tuition waiver according to the number of visiting students



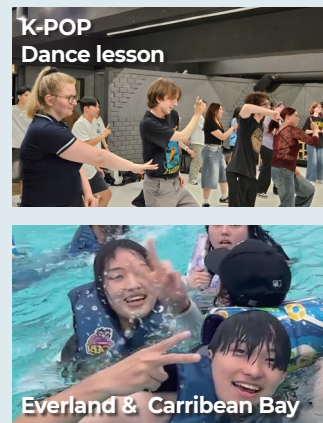
Media Scholarships

- A student-made promotional video highlighting their exchange university and experience

Features

- At the Heart of K-Entertainment
- No. 1 University in Performing Arts
- Faculty-Led Programs from U.S. Partner Universities
- Summer Program Scholarship for Japanese Students
- Learn from K-Culture industry experts from SM & YG Entertainment, TV production, and more
- Practical Korean language courses inspired by K-Dramas – Alive Korean with K-Drama
- 100% guaranteed on-campus dormitory accommodation

Cultural Activities



- Hanbok Experience at Gyeongbokgung Palace
- Nanta Performance
- Seoul N Tower
- National Museum
- Yongin Folk Village
- Lotte World
- Homemade Stamp
- Samcheong-dong Cafe Street
- Icheon Ceramic Village
- Painters Performance

Program

Program	Summer Program Session 1		Summer Program Session 2		Winter Program	
Schedule	2026. 6. 25. (Thu) ~ 7. 21. (Tue) [4 Weeks]		2026. 8. 4. (Tue) ~ 8. 21. (Fri) [3 Weeks]		January ~ February 2026 [2 Weeks]	
Category	Non - Partnership	Partnership	Non - Partnership	Partnership	Non - Partnership	Partnership
Application Fee	60 USD	-	60 USD	-	60 USD	-
Tuition Fee	3,400 USD	1,750 USD	3,000 USD	1,500 USD	3,000 USD	1,500 USD
Dormitory Fee	350 USD	350 USD	250 USD	250 USD	250 USD	250 USD

* The schedule is subject to change. Students will earn from 3 to 6 credits.

Curriculum

Major A

- K-Culture Class
- Photography Class(Prof. Kyung woo Chun)
- Creating "My Own" K-Contents(Prof. Takhoon Kim)
- Alive Korean with K-Drama Level 1 ~ 3

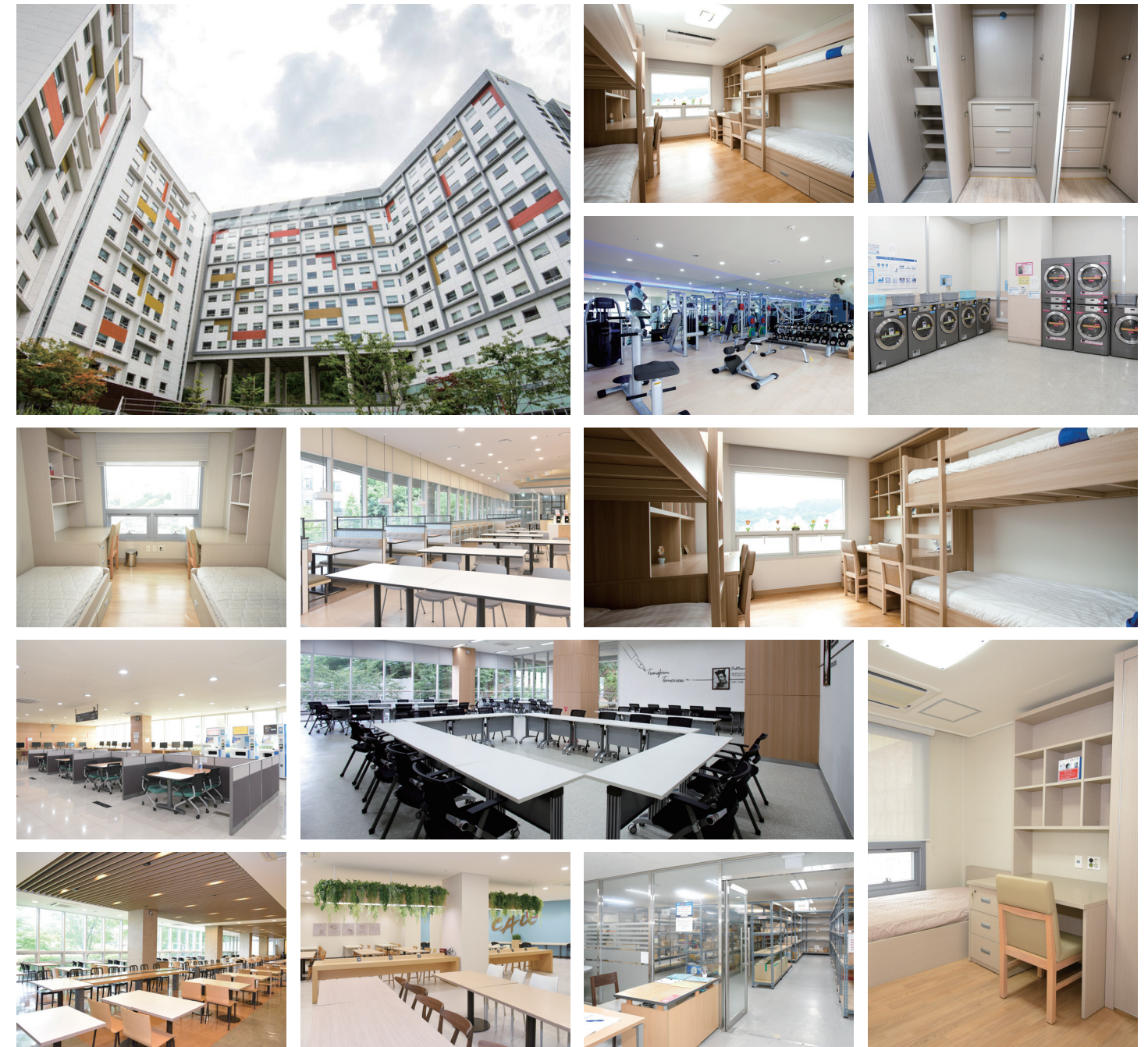
Major B

- Special Lectures related to
- Make Your Own K-Content
 - Producing the OTT Contents
 - K-Wave: Trends and the road ahead
 - Why has Korean K-Content gained global recognition?
 - Expanding K-Content/K-Culture/K-Music in SEA and beyond

*The lecturer and the details of the course may be modified due to the circumstances.

Chung-Ang University Dormitory

- The best and most advanced university dormitory in Korea
- Accommodation up to 3,000 students
- 1,290 rooms in total
- Air conditioning / Heating system / High speed wireless internet access / Dining area / Fitness center / Café / Lounge



INTERNATIONAL PARTNERS (677 in total)



Africa

Bostwana

University of Botswana

Egypt

The American University in Cairo

Ghana

University of Health Allied Sciences

Kenya

Kenyatta University

Morocco

Groupe ISCAE
Institute of Higher Education in Management

South Africa

University of Witwatersrand, Johannesburg

Asia

Azerbaijan

ADA University

Bangladesh

Daffodil International University

Brunei

Universiti Brunei Darussalam

Cambodia

Institute of Technology of Cambodia
Life University
Pannasastra University of Cambodia
Royal University of Fine Arts
University of Puthisastra

China

Beihang University
Beijing Arbitration Commission
Beijing International Studies University
Beijing Normal University
Beijing Wuzi University
Capital Normal University
Central China Normal University
Central University of Finance and Economics
Central University of Nationalities
Chang'an University
Changchun University of Technology
Changshu Institute of Technology
China University of Geosciences
China University of Petroleum
China University of Politic Science and Law
Chinese Academy of Sciences Institute of Automation
Chongqing University
Communication University of China, Beijing
Communication University of China, Nanjing
Communication University of Zhejiang
Dalian Art College
Dalian Maritime University
Dalian Ocean University
Dalian University of Foreign Languages
Dalian University of Technology
Donghua University
East China Normal University
Fudan University
Guangdong University of Foreign Studies

Guangzhou Huaili College
Gulin University of Technology
Harbin Engineering University
Harbin Institute of Technology (Weihei)
Hebei College of Finance
Henan Normal University
Hubei Institute of Fine Arts
Hubei University
Institute of Advanced Technology Heilongjiang Academy
Jiangsu Ocean University
Jilin Agricultural University
Jilin Normal University
Jilin University
Jinan University
Jinling Institute of Technology
Lanzhou University
Liaoning University
Minzu University of China
Nanjing Audit University Jinshen College
Nanjing Normal University
Nanjing University
Nanjing University of the Arts
Nankai University
National Academy of Chinese Theatre Arts
Northeast Normal University
Northeastern University
Northwest Normal University
Northwest University of Politics & Law
Northwestern Polytechnical University
Peking University
Qingdao Agricultural University
Renmin University of China
Shandong University of Finance and Economics
Shandong University of Technology
Shandong University (Jinan)
Shandong University (Weihei)
Shanghai Jiao Tong University
Shanghai Maritime University
Shanghai University
Shanxi University
Shenzhen University
Sichuan Fine Arts Institute
Sichuan International Studies University
Sichuan Normal University
Sichuan University
South China Normal University
Southwestern University of Finance and Economics
Sun Yat-sen University
The Central Academy of Drama
Tianjin Foreign Studies University
Tianjin Normal University
Tianjin University
Tsinghua University
University of International Business and Economics
University of Nottingham, Ningbo
Wuhan Sports University
Wuhan University
Xi'an University
Xi'an International University
Xi'an Jiaotong University
Xiangtan University
Yanbian University
Yangzhou University
Zhanjiang Normal University
Zhejiang University
Zhengzhou University

Hong Kong

City University of Hong Kong
Hong Kong Baptist University
Hong Kong College of Technology
Hong Kong Shue Yan University
Lingnan University
Technological and Higher Education Institute of Hong Kong
The Chinese University of Hong Kong (Shenzhen)

The Education University of Hong Kong
The Hang Seng University of Hong Kong
The Hong Kong Polytechnic University
The University of Hong Kong

India

Banaras Hindu University
Chandigarh University
Chitkara University
Indian Institute of Technology Madras (IITM)
Jawaharlal Nehru University
Manipur University
S. V. National Institute of Technology, Surat
Vel Tech Dr.RR & Dr.SR Technical University

Indonesia

Atma Jaya Catholic University
Binus University
Bogor Agricultural University
Diponegoro University
Duta Wacana Christian University
Gadjah Mada University
Institut Teknologi Bandung
Sepuluh Nopember Institute of Technology
Syiah Kuala University
Universitas Airlangga
Universitas Indonesia
Universitas Nasional
Universitas Sebelas Maret
University of Surabaya

Israel

Tel Aviv University

Japan

Aichi Shukutoku University
Aichi University
Chiba University
Chuo University
Digital & Language College of Shurin
Doshisha University
ECC Kokusai College of Foreign Languages
Fukushima University
Hosei University
J.F.Oberlin University
Japan College of Foreign Languages
Kagoshima University
Kanda University of International Studies
Kindai University
Kobe University
Kochi University
Kwansei Gakuin University
Kyoto Career College of Foreign Languages
Kyushu Institute of Technology
Kyushu Sangyo University
Kyushu University
Meiji University
Mie University
Nagasaki University
Nagoya City University
Nagoya University of Commerce & Business
Osaka College of Foreign Languages
Osaka Hospitality Academy
Osaka Institute of Technology
Osaka Metropolitan University
Osaka University
Professional College of Arts and Tourism
Ritsumeikan Asia Pacific University
Ritsumeikan University
Ryukoku University
Saitama University
Sapporo University
Shibaura Institute of Technology
Showa Pharmaceutical University

Soka University
Sundai Business College for Hospitality & Foreign Languages
Sundai Foreign Languages Global Business College
Tokyo Metropolitan University
Toyo Eiwa University
University of Marketing and Distribution Sciences

Jordan

Jordan University of Science and Technology

Kazakhstan

Al-Farabi Kazakh National University
Center for International Programs
Kazakh Ablai Khan University of IRWL
Kazakh Academy of Sports and Tourism
Kazakh National Pedagogical Univ. named after Abay
Kazakhstan Institute of Management Economics and S
Korkyt Ata Kyzylorda State University
L.N. Gumilyov Eurasian National University
Satbayev University

Laos

National University of Laos

Lebanon

American University of Beirut

Macau

Institute for Tourism Studies
Macau University of Science and Technology

Malaysia

HELP University
INTI International University
Kolej Universiti Poly-Tech Mara
Limkokwing University of Creative Technology
Malaysia University of Science and Technology
Taylor's University
UCSI University
Universiti Malaya (UM)
Universiti Malaysia Pahang
Universiti Putra Malaysia
University of Nottingham Malaysia

Mongolia

Huree University of Information and Communication
Mongolian University of Arts and Culture
National University of Mongolia
University of the Humanities

Myanmar

University of Pharmacy, Yangon
University of Yangon

North Korea

Pyongyang University of Science Technology

Pakistan

Lahore University of Management Sciences
National University of Sciences and Technology

Philippines

Adamson University
Ateneo de Manila University
De La Salle University
Mapua Institute of Technology
The Polytechnic University of the Philippines
University of San Carlos
University of The Philippines Diliman

Singapore

Nanyang Technological University, Singapore (NTU)

Singapore Institute of Management
Singapore Management University
Singapore Polytechnic

Sri Lanka

University of Peradeniya

Taiwan

Asia University
Chia-Nan University of Pharmacy and Sciences
Chung Yuan Christian University
Feng Chia University
Fu Jen Catholic University
Hsing Wu University
Kainan University
Ming Chuan University
National Central University
National Cheng Kung University
National Chengchi University
National Chi Nan University
National Chung Cheng University
National Chung Hsing University
National Dong Hwa University
National Kaohsiung Normal University
National Sun Yat Sen University
National Taipei University of Business
National Taipei University of Education
National Taipei University of Technology
National Taiwan Normal University
National Taiwan Ocean University
National Taiwan University of Arts
National Taiwan University of Science and Technolo
National Tsing Hua University
National University of Kaohsiung
National Yang Ming Chiao Tung University
Shih Hsin University
Soochow University
Tainan University of Technology
Taipei Medical University
Tainan University of Education
Tamkang University
Tatung University
University of Taipei
Yuan Ze University

Thailand

Chiang Mai University
Chulalongkorn University
Kasetsart University
Khon Kaen University
King Mongkut's Institute of Technology Ladkrabang
King Mongkut's Univ. of Technology North Bangkok
King Mongkut's University of Technology Thonburi
Prince of Songkla University
Silpakorn University
Thammasat University

United Arab Emirates

Canadian University Dubai
Institute of Management Technology
RAK Medical & Health Sciences University

Uzbekistan

State Conservatory of Uzbekistan
Tashkent International University
Tashkent State Institute of Oriental Studies
Tashkent State Pedagogical Univ named after Nizami
Uzbek State University of World Languages
Uzbekistan State Institute of Arts and Culture

Vietnam

Dalat University
Duy Tan University
Foreign Trade University
Hai Phong University

Hanoi University of Industry
Hanoi University of Pharmacy
Ho Chi Minh City University of Foreign Languages - Information Technology
Ho Chi Minh City University of Law
Ho Chi Minh City University of Technology
Hoa Sen University
Hue University
Hue University of Medicine and Pharmacy
HUTECH, University of Technology
Posts and Telecommunications Institute of Technology
The University of Danang
Ton Duc Thang University
University of Economics Ho Chi Minh City
University of Medicine and Pharmacy HoChiMinh City
Vietnam International Education Development
Vin University
VNU Hanoi, College of Foreign Languages
VNU Hanoi, University of Economics and Business
VNU Hanoi, University of Education
VNU Hanoi, University of Engineering & Technology
VNU Hanoi, University of Science
VNU Ho Chi Minh City
VNU-HCM, International University
VNU-HCM, Univ. of Social Sciences & Humanities
VNU-HCM, University of Science
VNU-HCMC University of Economics and Law

Europe

Austria

Alpen Adria University Klagenfurt
Austrian Institute for International Affairs
Johannes Kepler University Linz
University of Applied Sciences Bfi Vienna

Belarus

Belarusian State University

Belgium

Hasselt University
ICHEC Brussels Management School
University of Namur
Vrije Universiteit Brussel

Croatia

University of Zagreb

Czechia

Czech Technical University in Prague
University of Ostrava
VSB-Technical University of Ostrava

Denmark

Aalborg University
Copenhagen Business School
Jutland Art Academy
Roskilde University
University of Southern Denmark

Estonia

University of Tartu

Finland

Aalto University
Savonia University of Applied Science
South-Eastern Finland Univ. of Applied Sciences
Tampere University of Applied Sciences
University of Turku

INTERNATIONAL PARTNERS (677 in total)



France

CESI Ecole d'Ingenieurs
ECE Paris-Ecole d'Ingenieurs
Ecole Internationale de Creation Audiovisuelle et de Realisation (EICAR)
EDHEC Business School
EMLV-Management (Association Leonard de Vinci)
emlyon business school
ESAM
ESCE Business School
ESILV-Engineering (Association Leonard de Vinci)
ESSCA School of Management
European Institute of Information & Technology (EPITECH)
Haute ecole des arts du Rhin
ICN Business School
IGS-RH (Human Resources Management and Development)
iim-Multimedia (Association Leonard de Vinci)
INSA Rouen Normandie
INSA Toulouse
INSEEC School of Business and Economics
IPAG Business School
IPSA
ISC Paris Business School
ISCPA
ISTC - Strategies Et Communications
JUNIA
KEDGE Business School
Lumiere University Lyon 2
MBS Business School
Neoma Business School
Paris School of Business
Paris West University Nanterre La Defense
Sciences Po Bordeaux
Sciences Po Lille
The American Business School, IGS University
The International School of Business (ICD)
Toulouse Business School
Toulouse Catholic University (ICT)
Universite Catholique de Lille - FGES
Universite Grenoble-Alpes
Universite Paris 1 Pantheon-Sorbonne
Universite Paris Cite
Universite Sorbonne Paris Nord
University of Montpellier
University of Orleans
Y Schools

Georgia

International Black Sea University

Germany

Academy of Media Arts Cologne
Aschaffenburg University of Applied Sciences
Baden-Wuerttemberg Cooperative State Univ Mosbach
Bauhaus-University Weimar
Bielefeld University of Applied Sciences
CBS International Business School
Darmstadt University of Technology
DHBW Stuttgart
Folkwang University of the Arts
Frankfurt University of Applied Sciences
Freie Universitaet Berlin
Friedrich Schiller University Jena
Friedrich-Alexander Universität Erlangen-Nürnberg
Goethe University
Hochschule fuer Grafik und Buchkunst Leipzig (HGB)
HTW Berlin University of Applied Science
Humboldt-Universitaet zu Berlin
Johannes Gutenberg University of Mainz
Leipzig University
Technische Hochschule Nurnberg Georg Simon OHM
Universitat Bremen
University of Applied Sciences Darmstadt
University of Applied Sciences, Berlin
University of Augsburg

University of Bonn
University of Cologne
University of Duisburg-Essen
University of Europe for Applied Sciences
University of Music Detmold
University of Osnabruck

University of Western Macedonia

Hungary

Eotvos Lorand University
Moholy-Nagy University of Art and Design
Obuda university
Semmelweis University
Szechenyi Istvan University
The University of Szeged
University of Debrecen
University of Miskolc
University of Pecs

Ireland

Dublin City University
Institute of Technology Carlow
University College Dublin
Waterford Institute of Technology

Italy

Accademia Italiana
Ca' Foscari University of Venice
Sapienza University of Rome
The University for Foreigners of Siena
Universitas Cattolica del Sacro Cuore
University of Bologna
University of Florence
University of Macerata
University of Turin
University of Udine

Liechtenstein

University of Liechtenstein

Lithuania

Kaunas University of Technology
Siauliai University
Vilnius University
Vytautas Magnus University

Malta

American University of Malta

Netherlands

Erasmus University Rotterdam
Fontys University of Applied Sciences
Hague Conference on Private International Law
HAN University of Applied Sciences
Hanze University of Applied Sciences
HZ University of Applied Sciences
Leiden University
Radboud University
Tilburg University
University of Twente
Utrecht University
Windsheim University of Applied Sciences

Norway

NHH Norwegian School of Economics
NLA University College
Norwegian University of Science&Technology
University of Agder

Poland

Cracow University of Economics
Cracow University of Technology
The Polish National Film, Television & Theatre School
University of Warsaw

Portugal

ISCTE Business School
University of Porto

Romania

Alexandru Ioan Cuza University
University of Bucharest

Russia

Far Eastern National University
Irkutsk National Research Technical University
Kazan State University
National Research University HSE (Moscow)
National Research University HSE (St.Petersburg)
Novgorod State University
Peter the Great St Petersburg Polytechnic Univ
Repin University
Saint-Petersburg State University
The State Pushkin Institute of Russian Language
Ural Federal University
Yaroslav The Wise Novgorod State University

Slovakia

Technical University in Zvolen
University of Zilina

Slovenia

University of Ljubljana

Spain

Comillas Pontifical University
Instituto Europeo de Design spa Madrid (IED)
IQS Ramon Llull University
UCAM (Universidad Catolica San Antonio)
Univ. of Autonoma de Barcelona
Universidad de Navarra
Universitat de Valencia
Universitat Internacional de Catalunya
Universitat Politecnica de Catalunya (UPC)
University of Alicant
University of Jaen
University of Malaga
University of Mondragon
University of Technology, Arts and Design (U-Tad)

Sweden

Chalmers University of Technology
Halmstad University
Linnaeus University, Vaxjo
Orebro University
Swedish Red Cross University
Umea University
Uppsala University

Switzerland

Univ of Applied Sciences of Western Switzerland
University of Basel
University of Zurich
Zurich University of Applied Sciences
Zurich University of the Arts

Türkiye

Baskent University
Dokuz Eylul University
Hacettepe University

Istanbul Aydin University
Istanbul Bilgi University
Istanbul University
Kadir Has University
Ondokuz Mayis University
Sabanci University

United Kingdom

Cardiff University
Coventry University
Royal Holloway University of London
SOAS, University of London
The University of Manchester
University of Birmingham
University of Hull
University of Lancashire
University of Leicester
University of London, Goldsmiths
University of Sheffield
University of Sussex
University of Wales, New Port
University of York
York St John University

North America

Canada

Centennial College
Lakehead University
Memorial University of Newfoundland, Grenfell Cam
Memorial University of Newfoundland, St.John's Cam
Toronto Metropolitan University
Universite de Montreal
University of Alberta
University of Manitoba
University of Saskatchewan
University of the Fraser Valley
University of Waterloo
York University

United States

Alaska Methodist University
Alaska Pacific University
American University
Asia Pacific College
Bloomfield College
Boston University
Brookhaven College
California State University, Bakersfield
California State University, Chico
California State University, East Bay
California State University, Fullerton
California State University, Long Beach
California State University, Los Angeles
California State University, Sacramento
California State University, San Bernardino
California State University, San Marcos
California State University, Stanislaus
Campbellsville University
Central Washington University
Cleveland State University
Columbia College
Delaware State University
Duke University
Findlay College
George Washington University
Georgia Southern University
Georgia State University
Hawaii Pacific University
Kansas State University
Lawrence Berkeley National Laboratory
Loyola University New Orleans

Michigan State University
Millikin University
Minnesota State University, Moorhead
Mississippi State University
Monterey Institute of International Studies
North Dakota State University
Northeastern Illinois University
Northern Illinois University
Oklahoma State University
Pacific Lutheran University
Saint Mary's College of California
San Diego State University
San Francisco State University
San Jose State University
School of Visual Arts
Southeast Missouri State University
Southern Utah University
Southwest State University
St.Louis College of Pharmacy
State University of New York, Buffalo
State University of New York, Oneonta
State University of New York, Oswego
State University of New York, Plattsburgh
State University of New York, Stony Brook
Stevens Institute of Technology
Temple University
Tennessee Technological University
The Ohio State University
Towson University
Tufts University
University of California, Berkeley
University of California, San Diego (UCSD)
University of Chicago, Argonne, LLC
University of Cincinnati
University of Colorado, Anschutz Medical Campus
University of Georgia
University of Guam
University of Hawaii at Manoa
University of Hawaii, Hilo
University of Houston
University of Illinois at Urbana-Champaign
University of Maryland Baltimore County
University of Minnesota
University of Minnesota, Duluth
University of Montana
University of Nebraska, Kearney
University of New Mexico
University of North Carolina, Chapel Hill
University of Pittsburgh
University of San Diego
University of San Francisco
University of Southern California
University of Tennessee, Knoxville
University of the Sciences in Philadelphia
University of Wisconsin, Madison
University of Wisconsin, Milwaukee
University of Wisconsin, Stout
Utah State University
Virginia Commonwealth University
Washington State University
Widener University
Winona State University

Mexico

Tecnologico De Monterrey
Universidad de Monterrey
Universidad La Salle
Universidad Nacional Autonoma de Mexico (UNAM)
Universidad Tecmilenio

Oceania

Australia

Adelaide University
Curtin University
Deakin University
Griffith University
James Cook University
Queensland University of Technology (QUT)
Swinburne University of Technology
The University of Newcastle, Australia (UON)
University of Canberra
University of South Australia
University of Tasmania
University of Wollongong

New Zealand

Massey University

South America

Brazil

Brazilian Association (ABRUEM)
Federal University of Sao Paulo
Mackenzie Presbyterian University
Pontifical Catholic University of Rio de Janeiro
The Federal University of Minas Gerais (UFMG)
Universidade Estadual Paulista

Chile

Finis Terrae University
Universidad Adolfo Ibanez
Universidad de los Andes

Colombia

Pontificia Universidad Javeriana
Universidad de los Andes
Universidad del Rosario
Universidad Tecnologica de Bolivar

Peru

Universidad San Ignacio de Loyola S.A

Uruguay

Universidad ORT Uruguay



Contact Us

Office of International Affairs
84 Heukseok-ro, Dongjak-gu, Seoul 06974, Korea
Fax: 82-2-813-8069
<https://oia.cau.ac.kr>
E-mail: international@cau.ac.kr

